

Investing in East Harris County

Maintenance work in Baytown and Channelview

About our work

ExxonMobil and its affiliates own and operate pipelines in Baytown and Channelview. As part of our ongoing pipeline maintenance, ExxonMobil Pipeline Company is replacing approximately eight miles of pipe the area. Much of the work is taking place adjacent to and along our existing pipeline right-of-way between ExxonMobil's Baytown refinery and the Moore Road junction near the southeast intersection of Beltway 8 and Hwy 6.



We appreciate the patience of our neighbors as we work to enhance the safety and reliability of our operations. ExxonMobil Pipeline Company is committed to engaging with our neighbors, and our dedicated project representatives are available upon request to answer questions about our work. For more information please visit our website: <https://harris.exxonmobilpipeline.com/> or contact our project representative directly at 713.542.5399.

Safety is our priority

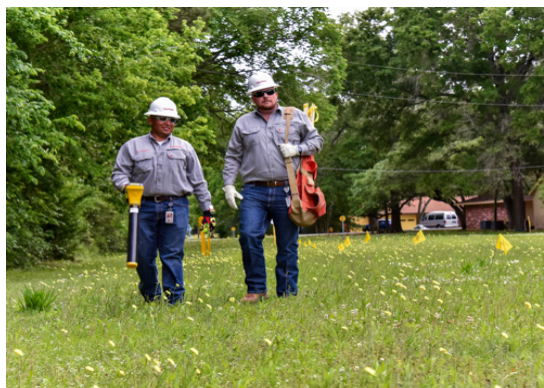
Safety is a core value at ExxonMobil Pipeline Company. Process safety – thoughtful, proactive risk management actions and safeguards – is one of the most important things we do. We strive for an incident-free workplace and a culture that supports our clear and simple objective: Nobody Gets Hurt. Our safety focus extends to our pipeline neighbors and those who live and work near our pipelines and facilities.

Regular maintenance keeps our pipelines operating safely. Numerous inspections are conducted during our work to verify the integrity of the new pipe before it is placed into service. Once a pipeline is operational, inspections are conducted on a regular basis for the life of the pipe as determined by federal regulations. All of our pipelines are remotely monitored 24/7 using advanced communications and leak detection technologies.

What to expect

This project is based on findings from our Integrity Management Program, which employs rigorous testing and analysis to identify areas of a pipeline that may need additional inspection, repair or replacement. Pipeline segments selected for repair and replacement are identified through continuous analysis of inspection results.

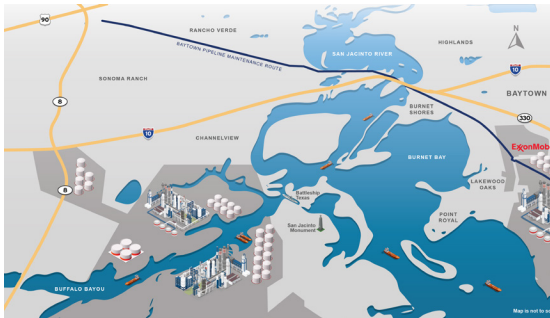
Our pipeline utility crew will survey the land, excavate a trench, stage the new pipe sections, and then weld and lay new pipeline segments. With the cooperation of landowners and local officials, some construction materials may be temporarily stored along the route. The existing pipelines will continue to be operated safely until all the repairs have been completed and the replacement pipeline segments have been installed, tested and prepared for operation.



After the new segments are put into service, the replaced segments will be safely removed from service and maintained in place. Pipelines that are removed from service are typically left in the ground to minimize disturbances to the environment, our neighbors and existing pipelines or other utilities. Our pipelines will be installed in compliance with all applicable regulations. Generally, the right-of-way will be restored to near previous condition and in accordance with landowner agreements.

Pipeline route and landowner agreements

Replacement activities will primarily occur adjacent to and along our existing pipeline rights-of-way. Where new or additional right-of-way, work space, or access roads are required to support the project, we will work with the landowners to seek fair and equitable agreements. For further specifics about the pipeline route, please contact us directly at (888) 804-4788.



Commitment to our neighbors and the environment

ExxonMobil Pipeline Company will openly communicate with property owners throughout the permitting and construction process. We will also brief community leaders and public officials on our plans.

1. All of our pipelines will continue to be safely maintained and operated in accordance with applicable local, state and federal regulations.
2. Through all stages of our work, ExxonMobil Pipeline Company will provide updates on progress and answer questions to quickly address concerns.

3. ExxonMobil Pipeline Company will consult with individual landowners regarding access to our easements on their property.

4. ExxonMobil Pipeline Company will seek to minimize any potential disruption or inconvenience to the community.

ExxonMobil and its affiliates are committed to operating in an environmentally responsible manner.

Investing in East Harris County

More than 130 ExxonMobil Pipeline Company employees and contractors work at our existing facilities in East Harris County. Our total investment for these projects is more than \$500 million, and will support construction jobs for trade workers across the region. Businesses in Harris County and across the region will directly benefit from our work through various subcontracting service agreements and associated expenditures with local restaurants, hotels, equipment rental operators, and other suppliers and service providers.

Workforce development and supplier diversity

Through programs, activities and investments, we strive to create and maintain a diverse workforce representative of the numerous geographies where we do business. Information on ExxonMobil's diversity and inclusion policies are available online at <https://corporate.exxonmobil.com>. If you are a vendor interested in opportunities related to these projects, please email us: vendor.opportunities@exxonmobil.com.

Who do I contact with questions or concerns?

ExxonMobil Pipeline Company values your comments and questions. Please contact us by:

- Calling (888) 804-4788
- Emailing public.awareness@exxonmobil.com